

Southville

Methodist Church

Seeking to know God and to make God known to others

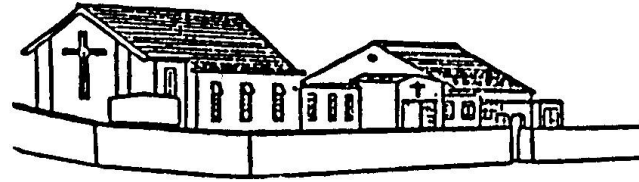


**Woodthorpe
Methodist Church**



**St. Dunstan's
Church, Feltham**

**T
H
E
E
N
D
E
D
A
S
N
T
E
W
R
S
N**



**Ashford Common
Methodist Church**



Christ Church Feltham

June - July 2023
In this Edition (34)

Welcome to The Eastern End

MINISTERS

Rev Andrew Reed

01784 252559

rev.reed@sfmc.org.uk

Woodthorpe Methodist Church

United Church of Egham

St Judes United Church

Rev Kofi Tekyi-Ansah

020-8890 2783

rev.kofi@sfmc.org.uk

Staines Methodist Church

Southville Methodist Church

Ashford Common Methodist Church

Rev Judith Allford

01784 434133

jallford@btinternet.com

St Judes United Church

Rev Andy Watkins

020-3261 0910

andy@christchurchfeltham.org

Christ Church Feltham

Rev Anne Dollery

020-8890 2011

AnneDollery@yahoo.co.uk

St Dunstan's Feltham

Rev Rudy Tan

rudy@christchurchfeltham.org

Christ Church Feltham (Curate)

The Church contacts for the Churches in this publication:

Ashford Common Methodist Church – Justin Camis

Southville Methodist Church – Marilyn Woodley

Woodthorpe Methodist Church – Verna Doe & Graham Wells

Christ Church Feltham – Rev Andy Watkins

St Dunstan's Feltham – Rev Anne Dollery

THE NEXT EDITION (August - September 2023)

Deadline for items to reach us is Sunday 23rd July for
publication on Sunday 30th July

Please put the deadline date in your diary!!

Articles printed in The Eastern End News may be re-printed, with attribution. Photographs remain the copyright of the original photographer.

© JUNE 2023

The full version is available in PDF format by e-mailing on request from the editors and an edited version – if necessary online.

Editors: Jonathan & Roger Griffiths
editor@easternendnews.org.uk

Printed and distributed by: The Griffiths Family

GDPR: All those whose contact details appear have given their expressed consent to its inclusion in this publication.

Many thanks to all those who contribute; new contributors always welcome, remember to include photos if possible.

From the Editors

A number of items that we hoped to be including in this edition but for various reasons these are having to be delayed and will appear in later editions

PRINTING SERVICES

We can produce documents of many sizes, on white or coloured paper and with colour print if required so if we can help whether it be for a church event or family event please do get in touch and we will happily give you a quote.

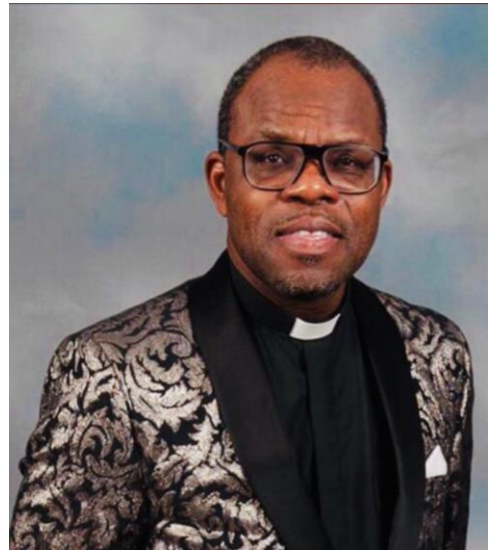
printingservices@rjjagriff.me

Dear Church Family,

Greetings and blessings.

By the special grace and mercy of God, we are blessed to see the month of June. May June usher us into a season of open doors and pleasant surprises in Jesus mighty name. A special thanks goes to

Linda Marshall for organising the ecumenical Christian aid sponsored stroll and Roz for organisational the Circuit Easter offering service and all their helpers. A hearty thanks goes to all who are working so hard to keep our church and its various groups functioning. God bless you all richly.



Pastoral visits

To assist me in touching base with those who need a visit, I will appreciate some form of weekly communication. Don't hesitate to text or call me on 07931528165.

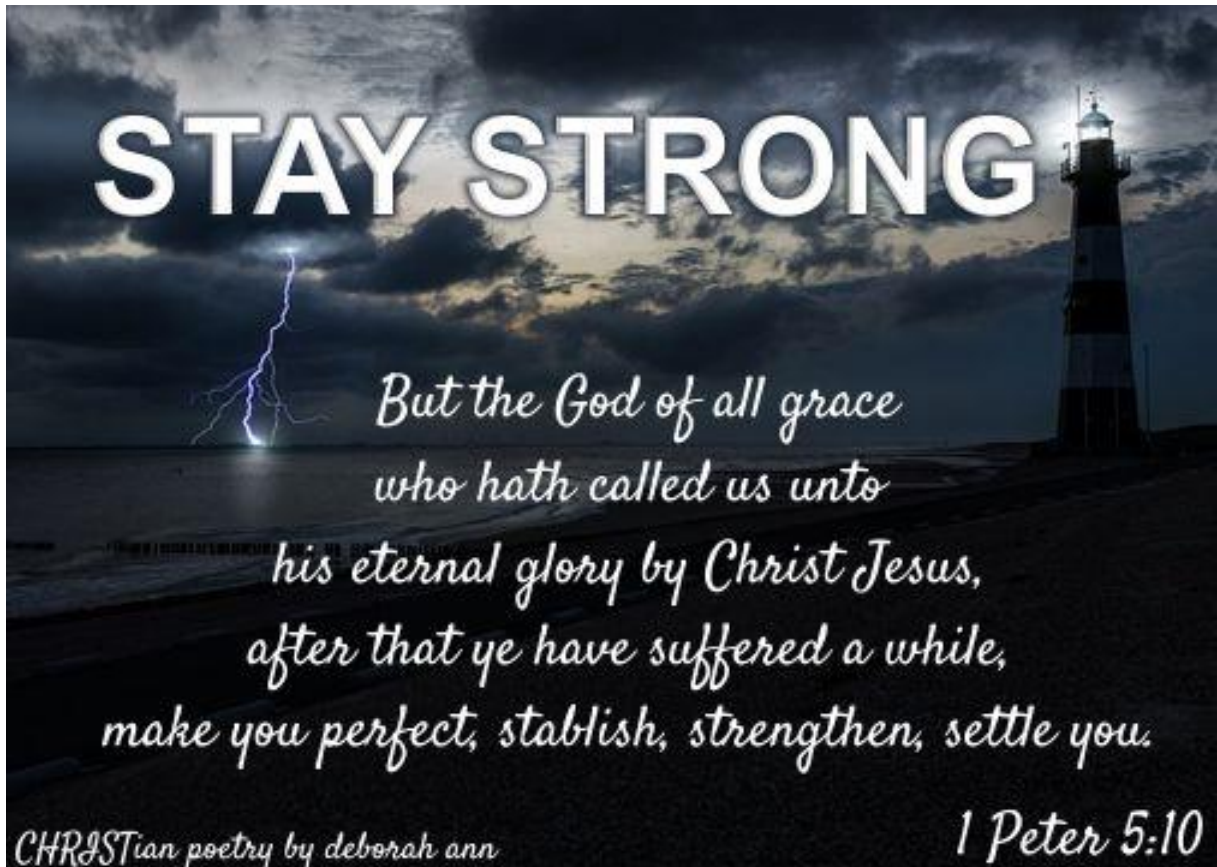
New Members Class

Plans are in the pipeline for the start of a new members class for those who wish to become formal members of our church with all its glorious benefits. Please table your interest by text or call me on 07931528165.

**THE MONTH OF COMPLETION,
ESTABLISHMENT,
STRENGTH AND SETTLEMENTS**

1 Peter 5:10

10 But [a]may the God of all grace, who called [b]us to His eternal glory by Christ Jesus, after you have suffered a while, perfect, establish, strengthen, and settle you.



The message translation puts this verse in context beautifully.

Keep a cool head. Stay alert. The Devil is poised to pounce, and would like nothing better than to catch you napping. Keep your guard up. You're not the only ones plunged into these hard times. It's the same with Christians all over the world. So keep a firm grip on the faith. The suffering won't last forever. It won't be long before this generous God who has great plans for us in Christ—eternal and glorious plans they are!—will have you put together and on your feet for good. He gets the last word; yes, he does. MSG

Prayer for the month

FATHER, IN JESUS MIGHTY NAME, WE RAISE THE STANDARD OF THE BLOOD OF JESUS CHRIST AGAINST THE DEVIL AND ALL HIS ACTIVITIES AGAINST US THIS MONTH AND RENDER IT POWERLESS. MAY THE LORD EASE OUR SUFFERINGS AND UPHOLD US WITH HIS GRACE TO ENDURE OUR CROSSES. MAY THE LORD PERFECTLY ESTABLISH, STRENGTHEN AND SETTLE YOU AND ME GLORIOUSLY THIS NEW MONTH IN JESUS MIGHTY NAME.



Every blessing
Kofi

The Methodist Church

STAINES AND FELTHAM CIRCUIT

Serving the people of

Feltham, Ashford, Staines, Egham

From the Circuit Office & Beyond



Dear Friends

I am grateful for the opportunity that Eastern End News gives to me keep in touch with Churches on this side of the Circuit. I realise that this magazine has a wider readership than simply those Churches identified mentioned each quarter which is while it is worth including items that affect other Churches around the Circuit.

By now most of you will be aware that the Trustees for Methodist Church Purpose, (TMCP) have in their role as Data Controller for the Methodist Church completed the annual cycle seeking assurance that local Churches are complying with the General Data Protection Regulations. I thought that it might be helpful to explain some of the terms relating to this topic for your information:

The **Data Controller** (“Controller” under the GDPR) is the legal entity that is responsible for ensuring compliance with the relevant data protection legislation. The Data Controller determines the purposes for which data is processed and the means by which it is processed.

Whilst TMCP acts as the Data Controller for all Churches, Circuits and Districts, are deemed to be the “**Data Processors**” i.e. the people who deal with data/ information on behalf of the Church). and Data Processors are any person who processes data on behalf of the Controller.

Other definitions include:

A **Data Subject** is an individual about whom particular personal data is about.

A **Data Subject Access Request (SAR)** is a written request made by an individual (the Data Subject) to see a copy of the information that an organisation holds about them.

Personal Data is any information relating to an identified or identifiable natural person, the ‘Data Subject’,

The term “**processing**” is defined very broadly in the GDPR (as it was in the data Protection Act 1998) and basically means anything that Managing Trustees do to or with personal data. The GDPR states that processing includes the; “collection, recording, organisation, structuring, storage, adaptation or alteration, retrieval, consultation, use, disclosure by transmission, dissemination or otherwise making available, alignment or

combination, restriction, erasure or destruction” of such data. (GDPR Article 4(2)).

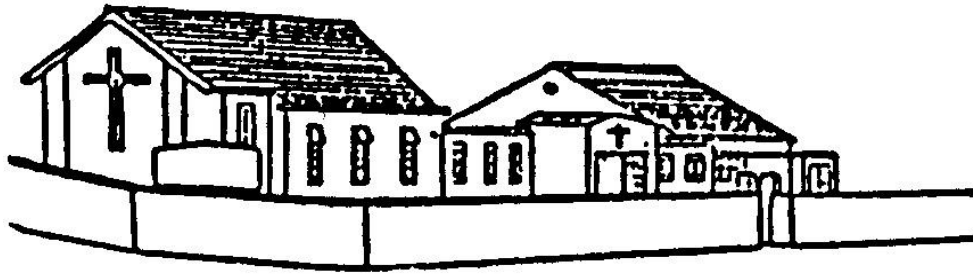
I am grateful for all the work that has gone in locally to ensure that, so far as we are able we have done all that is necessary to ensure that this Circuit is compliant. In the Office Sue and I seek to ensure that we are following the guidance on your behalf which is why it is important that you make us aware of changes to your data that may affect us. In the same way, when we are notified of changes we endeavour to make sure that we pass the information to those Churches that need to know. Occasionally issues arise which could amount to a breach of the Regulations. This can have serious consequences so, in the event that you learn of something that is of concern, please feel free to contact the Office and we will try to help. One area to be particularly careful relates to the sending of emails on behalf of the Church where the email is going to more than one person. Our strong advice is to ensure that you use “BCC” (Blind Carbon Copy) unless you are satisfied that this is not necessary because it is going to a group of people such as members of Church Council, or a Working Group. If you use BCC it is good practice to list the recipients at the end of the letter. You will find that this is what we do when sending emails from the Office in most circumstances. Data protection is a complex matter and if you would like any more information the following link will take you to the TMCP website, but also note the disclaimer at the end of the article which also applies to the contents of this short letter.

<https://www.t MCP.org.uk/about/data-protection/resources/guidenotes/who-are-data-controllers>

Once again, thank you for all that you are doing all around the Circuit in supporting our mission and outreach.

God bless.

Andrew



Ashford Common Methodist Church

Saxon Road (Off Feltham Hill Road), Ashford. TW17 1LW

Church Contact: Mrs. Kait Sanger 07941 540214

ashford-common@sfmc.org.uk



During June we extend greetings for a happy birthday to June Hughes, June Mumford, Carol McKenner and Olive Chambers. Similarly we send greetings in July to Denise Regent and Doris Owen.

We hope those who took part in the Action for Children Lent challenge, "Count Your Blessings" enjoyed the opportunity. With thanks, the sum of £197 was raised.

Thanks are extended to everyone who contributed to the Easter Offering appeal, £398 was raised with an additional £57 expected from Gift Aid.

On 4 May, the doors of our Church were opened to the wider community when our worship space was again used by the Local Authority as a Polling Station. Around 2000 of our immediate neighbours had the opportunity to step inside our building.

A Celebration of the
127th Anniversary of
Ashford Common Methodist Sunday School
will be held on Sunday 11 June at 10.30am & 6.00pm
With services led by Rev Andrew Reed



In maintaining our Church grounds, we normally try to have the grass cut in time for the Mother's Day Service. This year, the weather has been against us and we weren't able to get out there until 13 May. With some additional pairs of willing hands we've been able to get a firm grip of the vegetation. Not only has the grass been cut but the edges strimmed, shrubs trimmed and weeds wrestled to the ground and a strong treatment applied.

Professional power tools, including a petrol mower and strimmer help a great deal but disposing of the waste can be an issue. We gathered all the arisings into a tarpaulin, but failed to recognise the size of the car we had to fit it in!



Keeping the garden neat will be particularly important for the barbecue we have planned for Sunday 16 July. Please make a note of the date, don't make other lunch plans for that day and join us in the garden after the morning service.



As this magazine is published, our Boys' Brigade Company will be making the transition from their indoor activities programme and moving to the more informal and adventurous outdoor programme. Members of all ages will meet together in the same place at the same time until the end of term on 17 July.

Looking back over April & May, and in spite of the disruptive nature of the numerous Bank Holiday Mondays, our programme has remained wide and varied. Among the craft activities that have been well received we've made stained glass windows, tried glass engraving and pyrography.



The Coronation of the King was celebrated, all age groups have talked about water in the bible and it's wise use today, and Juniors tasted some things they may not have tasted before.



MWiB Easter Offering Service 2023

The **Methodist** Church 



What is the MWiB Easter Offering Service?

Each year, the Methodist Church holds an Easter Offering dedication service, run by Methodist Women in Britain (MWiB). This tradition dates back to 1883, when women in Manchester collected £32 for missionary work overseas from 'Christmas pennies' at family gatherings on Christmas Day. In March 1884, the London Districts distributed Easter envelopes and collecting bags asking for a penny a head, and collected around £100. In 1900, Women's Work raised £1,655 for the work of overseas missions.

Since then, each successive Methodist women's movement has encouraged donations in support of God's mission. From this, Methodist Women in Britain (supported by the Global Relationships team) have produced an annual service of dedication, often used widely around the Connexion as a circuit service. All the money raised through the Easter Offering goes to the World Mission Fund of the Methodist Church in Great Britain for work in our Partner Churches around the world.

Our own Easter Offering service took place at Woodthorpe (Edinburgh Drive) on Thursday 18th May at 2pm. Prior to that, each church had been given a set of envelopes to distribute to their congregations ready for the collection on the day of the service. Some churches returned their envelopes as a group, while

others encouraged their members to attend the service and take their envelopes in person.

Our own SFMC MWiB Easter Offering Service 2023



Many thanks to everyone who contributed in any way to the great success of our own Easter Offering Service which was excellently hosted by Woodthorpe (Edinburgh Drive). Whether this was through filling your Easter Offering envelope, volunteering as a reader, providing the refreshments or simply coming to the service yourself, this was much appreciated. It was a very moving occasion, and well supported by all the churches involved (Woodthorpe, Staines, Egham, Southville and Ashford Common). £398 was raised in total through the

envelope collection, and this will be further enhanced by the gift aid which will be added after it has been claimed back from the tax man next year.

The service is written by different people each year, and this year it was by Hilary Evans (MWiB President 2019-2021) who took as her theme the



increasing migrant and refugee crisis. The various stories of refugees, and the cities, churches and individuals who are supporting them, really brought the situation to life, as did the physical objects which were placed on the table one by one during the intercessions - including a life jacket, a tent, a sleeping bag, bread and water and a purse of money. It made us realise how fragile are the lives of the people who arrive on our shores

penniless, frightened and often traumatised, and how reliant they are on the goodwill of the people in the receiving countries.



We were particularly fortunate to be led through the afternoon by Helen Cornick, President of the MWiB London region. Helen's thorough knowledge of the materials made the service so much more meaningful for all of us, and we very much hope to see her again in the future.

Book the date for next year's service:
Thursday 2nd May 2024 2pm.

Roz Sendorek



Spring Harvest started in 1979 but like the rest of the country Spring Harvest was hit by the pandemic in 2020 when we all found ourselves restricted in what we could do. As a result the event organisers moved the event on-line and this was the founding of Spring Harvest Home with the already planned topic of 'Unleashed'. In 2021 Spring Harvest Home was back with the topic of 'Unrivalled.' In 2022 Spring Harvest was able to meet onsite but with the added benefit for those that couldn't get to site could purchase access to the Spring Harvest Home facility. The topic of 'Restore, Renew, Rebuild' was very relevant and exciting topic as we continued to come out of the pandemic.



This year (2023) – the topic this year was 'FLIPPED – Life in the upside down kingdom'. Spring Harvest @ Home 2023 was streamed live from Minehead – Butlins from the 10th April until 14th April hosted by Beatrice Smith, Sheridan Voysey, Sarah Whittleston – in addition to the LIVE material there was a considerable amount of 'on

demand' material. Worship was led by Lou Fellingham. One feature that I got my head around this year was the chat facility where those of us on line could interact and ask questions for most of the event. The online material used closed caption and subtitles for those that needed them. As always there was a variety of printed material linked to the topic.

Each morning started on line with a morning devotional along with a look at the day ahead. This was followed by The Big Start which is an opportunity for the whole family to come together to start the day before those on-site going off to more age related sessions.



This year I was able to listen to both the Bible Studies, first with John Swinton – 'Thinking it through' followed by an exclusive opportunity for those on Spring Harvest Home to be involved in a post Bible Study discussion with John Swinton. After this there was a second study with Rachel Gardner entitled 'Working it Out'. In the evening we joined those at the 19:00 Celebration. We had the following speakers delivering the message:

- Sarah Whittleston – Lead Pastor at Elim Life Church in Birmingham.
- Dr Sharon Prentis – Deputy of the Church of England Racial Justice Unit
- Danielle Strickland – Author who joined both sites live from Canada.
- Dez Brown – CEO of Spark2 Life
- Leon Evans – Lead Pastor at Life central Church in Birmingham.

This was one of a number of different styles of celebration to suit different people want on site.

This year the event was as powerful as ever and I feel that this has been an important part of me moving forward with my future and hope to be able to attend the Live Event in the near future. If you would like to find out more about the event visit their website which is www.springharvest.org

Jonathan Griffiths

Southville

Methodist Church

Seeking to know God and to make God known to others

Tachbrook Road (off Bedfont Lane), Feltham, Middlesex TW14 9NX

Church Contact: Mrs Maggie Netto 07956 553974

contactus@southvillemethodistchurch.org.uk

www.southvillemethodistchurch.org.uk



Happy Birthday to those with birthdays including Jan Wicks in July

Craft Activity / Lego Mornings

This year we are planning to hold a series of craft activity/Lego mornings for primary school aged children living in our community. Many of these children live in hotels or high rise flats and we want to provide a safe place for them to experience fun activities together with their parents. The session will run from 10.00 am - midday.

The dates are as follows:

Monday 24th & Wednesday 26th July

Monday 14th & Wednesday 16th August

Flyers will be distributed through Cardinal Road Infant School, Victoria Road Junior School and Southville Primary School.

Afternoon Tea Fund Raiser

Our afternoon tea fund raiser in aid of Action for Children will now be held on Saturday 26th August to ensure that we do not clash with other similar events being planned in the circuit.



At Southville Methodist Church

We held another Big Breakfast, continuing a popular series, with a quiz and raffle attached. For a donation to Christian Aid, people could choose a cooked breakfast, toast, tea or coffee - or all of them! This raised £400, which will be worth more to the charity because much of the money donated can be Gift-Aided.



**Every Sunday
10:00 - 10:30 am**

Prayer & Praise Meeting

Followed by Worship Service at 10:30

Southville Methodist Church

Corner of Bedfont Lane & Tachbrook Road,
Feltham TW14 9NU

Again I tell you this: If two of you agree on earth about anything you pray for, it will be done for you by My Father in heaven. For where two or three are gathered together in My name, there I am with them.

Matthew 18:19-20



Emmanuel Church in Eastbourne

BEST BEFORE

Have you noticed how supermarkets have now stopped putting 'Use By' dates on lots of produce? They've done it to stop wastage, as food is often fine to eat even if 'Best Before' a certain day. That may be true for food, but is it true for church buildings too? That's what we've had to grapple with in Eastbourne!

In 2014 four churches in Eastbourne – two Methodist and two United Reformed – finally decided to merge. They'd spent many years thinking and praying about it, but in 2014 they decided to properly come together as one church, one fellowship. As a part of this, they decided that the four existing church buildings – all Victorian or early 1900s had actually come to the end of their 'Best Before' dates.

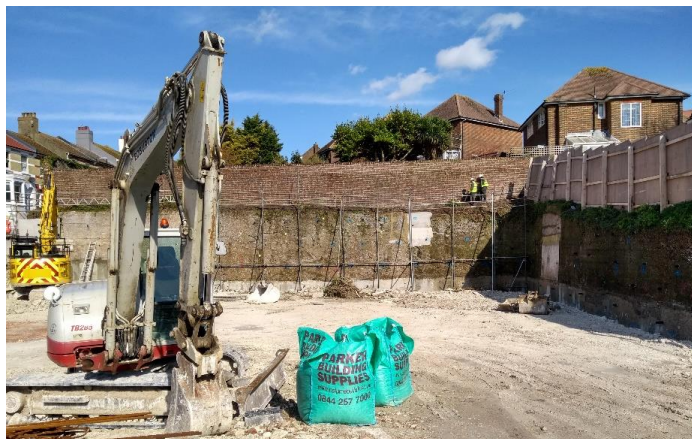


None of the buildings was environmentally friendly, none of them was good for disability access, none had parking, and all of them showing signs of wear and tear – some seriously so. It was the usual things very old buildings need doing: stonework, heating systems, electrics, roof repairs and more. Central Methodist (left) is Grade II listed too – making repairs not only expensive but any modern improvements

very difficult / impossible to get approved.

The decision was taken to sell three of the buildings, demolish the fourth and erect a new church premises on that site, fit for the needs of church in the 21st Century. It took a couple of years to get planning permission for the new place and begin fundraising, but then the scheme began to accelerate – in recent years we've merged the congregations into one and squished into our smallest (but most user-friendly) building, while selling two and demolishing Upperton United Reformed Church's site.

By January 2020 the site (right) was cleared, ready for the new premises to begin...and within weeks the pandemic brought everything to a massive halt. Even when construction could recommence, we found



prices had been hiked – sometimes massively so; shortages of labour and HGV drivers affected progress; the economic impact of Brexit in terms of importing materials was significant and I don't need to tell anyone reading this article about how difficult inflation is. A bag of weekly shopping going up 10% is bad enough, but a £3m+ building scheme hit by inflation is just awful.

In the last 12-18 months we have pressed ahead regardless and the new church space is in its final stages – we're hoping to be in this Summer. Ironically after investigating so much time, energy and money in a new premises, we spent the best part of two years learning how to be church without needing one at all!

When we move, we'll have a space with thirty parking spaces, electric charging points, a building with excellent



energy efficiency and insulation. Modern standards of disability provision will make us a far more inclusive and accessible place too. We've got a café/welcome area, hall with a sprung floor, and rooms for our church-owned and run nursery,

complete with roof garden. Above you can see our sanctuary taking shape, and the low-level wash basins – these will go down very well with Messy Church and the toddlers!

Over these years we've learned that as well as the buildings needing the radical overhaul, it's we as a people who've needed the overhaul too. We've had to honour traditions and familiar ways while at the same time begin new patterns of worship and tradition. We've had to become far more outward-looking and seek to find, and share the love of God in the community around us.



A final thank you – the Staines and Feltham Circuit awarded us a grant this Spring of £10,000 – and we are deeply grateful. Faced with many difficulties, the support and blessing of friends from within our District is both humbling

and inspiring. Thank you for your support – and please look out soon for an invitation from me to come and visit Eastbourne when we're in the new place and up and running!

Grace and Peace to all at Staines & Feltham from your friends at Emmanuel Church, Eastbourne.



*Rev. Paul Tabraham
April 2023*

ECCUMENICAL PARISH OF FELTHAM



Christian Aid Week took place in May, as every year; but unlike many years, May also included the coronation of King Charles III, with widespread celebrations and an extra bank holiday. This made it difficult to make

time for - or attract attention to - special events in Christian Aid Week itself; our plans therefore covered a longer time period.

Here in the Ecumenical Parish of Feltham, Sunday services at the beginning of the Week - 14th May - focussed on Christian Aid. The focus for the year was on disadvantaged, mainly female, farmers in rural Malawi; the projects Christian Aid is involved with include a heavy emphasis on 'pigeon peas', which we would know as unrefined yellow split peas. Good quality seed can produce a heavy and highly nutritious crop, which is more resilient than most to extremes of weather. Attractive films were provided, showing the lady farmers working together to produce flour from their crops, bake bread from the flour, and sell it.

Unhappily, after the films and publicity material had been worked on, a cyclone of record length hit southern Malawi (Cyclone Freddy in March 2023) and caused great damage to fields, crops, trees and buildings; the disadvantages suffered by the rural farmers were magnified.

At St. Dunstan's, people were invited to donate to Christian Aid through various means, electronic and otherwise.

Southville Church held another Big Breakfast

Back at St. Dunstan's, Monday morning coffee drop-in (normally free of charge) held a special session for Christian Aid, with cake, quiz and raffle, which raised £100. There are also tentative plans for a Quiz Night with Puddings in early June at St. Dunstan's, at time of writing its not clear whether there is sufficient interest.

Rachel Stuchbury

Representative Synod April 2023

The Representative Synod meets twice a year and provides an opportunity for presbyters and the laity to meet, chat and learn about what is happening in other circuits across the District. In April in excess of 120 met at the Church on the Heath in Camberley. Our circuit is part of the South East District, the Chair of which is Rev Dr David Hinchliffe. Our representatives were Rev Andrew Reed as Superintendent of our circuit, Rev Dr Kofi Tekyi – Ansah as presbyter and three circuit stewards.

Synod begins with an Act of Worship. This is followed by business matters including the financial reports and the budget for 2023 – 2024. Everyone is invited to attend Synod but it is only those appointed by the Circuit meeting who having voting rights. Best wishes were extended to three people who will be ordained as part of the Methodist Conference on Sunday 25th June 2023.

Each meeting has a theme and this Synod's was 'Making a Difference across the District'. Examples of this was given through video presentations from work in schools in Fleet, creating one church from four in Eastbourne and Gravesend's work in the local community. A diverse range of projects but equally interesting.

The keynote speech was given by Deaconess Eunice Attwood and encouraged those at Synod to think how they could engage with those on the margins and particularly poverty.

After lunch there were workshops focussing on Methodism and forward thinking, children and young people growing up in the world as it is now, the work of churches in the night economy and finally the church in the rural community.

These provided much food for thought and discussion.

Synod ended with the Chair conducting an act of worship.

Paulin Shilston



SERVE the communities of
Ashford and Laleham by responding to the needs of society.
It is a church where EVERYONE is welcomed.

Clarendon Road, Ashford, Middlesex. TW15 2QR

Edinburgh Drive, Laleham, Middlesex. TW18 1PH

Church Contacts: Verna Doe 01784 420183

Mr Graham Wells 01784 258785

info.woodthorpe@sfmc.org.uk

www.woodthorpemethodistchurch.co.uk

EDINBURGH DRIVE



I would like to tell you about our local Thursday Fellowship.

We meet on the first and third Thursday of each month at 2.30 at Woodthorpe church, Edinburgh Drive, Staines-upon-Thames, TW18 1PH.

Each meeting begins with a prayer and hymn and follows with an activity, which so far have included a selection of fascinating speakers, slide shows, painting and card making, quizzes and a sing-a-long.

We always welcome new ideas for further meetings or would love to share your hobbies or interests with the group.

We end our meetings with a delicious selection of cakes and biscuits coffee and cake and plenty of time for a chat.

Please feel free to join our friendly group, you would be made most welcome.

A little more about our speakers.

Graham, as many of you may know, is an avid hill/ mountain walker and he brought in and shared a selection of slides and tales of some of the beautiful walks he has made in the UK.

We had a talk from Alan who works at a local food bank. Who explained how people get their names put forward to get a delivery of food and some examples of how people come to need such help.

We had a visit from Simeon who works at HMP Bronzefield. He shared his experiences supporting women leaving HMP Bronzefield , as he walked with them to Ashford station at the end of their sentences. As told in his recently published book, “One mile to make a difference.” A really interesting read.

Simeon returned at a later date to tell us about how Worship takes place at HMP Bronzefield. There are women of many faiths but, through communal worship, they look to share links rather than look for differences in their worshipping...food for thought.

Desmond, told members of the group about how his “holiday “to Nigeria, took a turn when God spoke to him. It led him to get pastors from 30 churches there, who all worked and worshiped independently of each other, to meet share ideas and work together in the work of Christ and the health and welfare of the most vulnerable groups. This group has now expanded to 200 pastors and church leaders attending a four day event last year!

Many of you will know Phil, who came and told us his journey of life, taking him from the peak of academia through severe life changing illness back to the man we know today.

Thank you to you all.

We look forward to our next meeting June 1st (put it in your diary) when Brian is coming to talk to us about Heathrow, before the airport.

Look forward to seeing you at this or subsequent meetings

Sandra Davis

Coffee Morning



Wednesday Morning

at Edinburgh Drive run by Kingdom Living Church
9.30 am – 12 noon, **EVERY** Wednesday

PRAYER IN THE CHURCHES



If you know of anyone or of any circumstance requiring our prayers, phone Bobby (from Woodthorpe) 01784 251944 or

Email: prayer@easternendnews.org.uk

If you would like to be added to the prayer chain please phone or email

The Furnace

Worship together and pray for Feltham

Every Wednesday at 19:45

Everyone is welcome at Christchurch Feltham

Please see our website

<https://www.christchurchfeltham.org/>

Bible Study



Tuesday at 20:00 alternate weeks

Please contact Jill Britton to join
and

Thursdays at 10:00 weekly.

Please contact Graham Wells to join

All are welcome!!!

What we are doing in our local community?

THE NEEDS OF OUR COMMUNITY FOOD PROJECTS

MANNA
the Food Bank in Staines



List of our current shortages:

Long-life:

Semi-Skimmed Milk (Green)
Long-life Juice
Small Tomato Ketchup
Instant Mashed Potato
Crackers

Tinned:

Rice Pudding
Custard
Vegetables
Baked Beans
(we have plenty of sweetcorn thanks)
Children's Toothbrushes/Toothpaste,
Toilet Rolls & Liquid Soap

From all the volunteers at Manna

CHURCH CONTACTS AND ACTIVITIES

ASHFORD COMMON METHODIST CHURCH

Feltham Hill Road, Ashford Common, TW15 1LW

Mrs. Kait Sanger - 07941 540214 ashfordcommon@sfmc.org.uk

MONDAY	Term Time	Boys' Brigade Anchor Section / Junior Section	17:30 / 18:30
THURSDAY	Term Time	Boys' Brigade Company Section	19:00
SUNDAY	Weekly	Morning Worship & Sunday School	10:30
		Evening Worship	18:30

CHRIST CHURCH FELTHAM

Christ Church, Hanworth Road, Feltham. TW13 5AE

Rev Andy Watkins hello@christchurchfeltham.org www.christchurchfeltham.org

TUESDAY	1 st Tuesday	Feltham History Group	19:45
WEDNESDAY	Weekly Term Time	Stay and Play	10:00
	Weekly	The Furnace - worship together and pray for Feltham	19:45
SUNDAY	Weekly	Informal Service with Kids Groups	Door Open 10:00
	3 rd Sunday	Community Lunch everyone is welcome, bring some food to share!	After Church

SOUTHVILLE METHODIST CHURCH

Tachbrook Road, Feltham, Middlesex. TW14 9NX

Mrs. Maggie Netto – 07956 553974 contact-us@southvillemethodistchurch.org.uk

www.southvillemethodistchurch.org.uk

TUESDAY	2 nd	TALC (Tuesday Adult Leisure Club)	14:00 – 16:00
SATURDAY	1 st	Private Prayer	09:30 – 10:30
SUNDAY	Weekly	Prayer and Praise Morning Worship	10:00 10:30

ST DUNSTAN'S FELTHAM St Dunstans Road, Feltham, Middlesex. TW13 4JY

Rev Anne Dollery - admin@stdunstansfeltham.org.uk www.stdunstansfeltham.org.uk

MONDAY	Weekly	Drop-in	10:00– 12:00	See Weekly Notices for Details
	Fortnightly	Bible study on Zoom	20:00	
WEDNESDAY	Weekly	Holy Communion	10:00	
THURSDAY	Monthly	WOT (Women on Thursdays)	14:00- 16:00	
SUNDAY	Weekly	Parish Communion in church	09:45	
	Monthly	Morning prayer on Zoom	09:30	

WOODTHORPE METHODIST CHURCH

Clarendon Road, Ashford. TW15 2QR and Edinburgh Drive, Laleham. TW18 1PH

Mr Graham Wells - 01784 258785 woodthorpe@sfmc.org.uk

MONDAY	Clarendon Rd	Weekly Term Time	Rainbows (Aged 5 – 7)	16:30 – 17:30
			Brownies (Aged 7 – 10)	17:50 - 19:30
			Guides (Aged 10 – 15)	19:00 - 21:00
TUESDAY	Zoom	Alternate weeks	Bible Study	20:00
WEDNESDAY	Clarendon Rd	2 nd Wednesday (Not at Church)	Clarendon Ladies Group	12:00
	Edinburgh Dr.	Weekly	Coffee Morning (KLC)	09:30 -12:00
	Edinburgh Dr.	Last Wednesday of month	Messy Church	15:30 – 17:30
THURSDAY	Zoom	Weekly	Bible Study	10:00
	Edinburgh Dr.	Weekly	Fellowship	14:30
	Clarendon Rd	Last Thursday of month	Messy Church	15:30 – 17:30
SUNDAY	Clarendon Rd	All except last Sunday	Morning Worship	10:30
	Edinburgh Dr.	Last Sunday		10:00



For the families and friends of those that have passed away since the last publication:

Feltham Parish (St Dunstan's Parish & Southville Methodist Churches):

Sandra Carter
Alan Condon
Troy Irvin
Mavis Kemp

Helen Stone
Sylvia Safrette
Patricia Newbury

All those that work training:

in and study in our educational establishments
with the young and old in our communities.
in our Emergency Services
in our Hospitals & Community Health Care
in our Social Care
in our mental health services

All those in the ministry of God:

Ministers, Chaplains, Local Preachers and Worship Leaders
and those in Training including those Preaching and
leading worship in our churches

Jonathan Perkins
Rev Kofi Tekyi-Ansah
Margaret Ash
Sheila Hassan
Rev Roy Hollands
Carol McKenner
Rev Andrew McLuskey

Paul Murphy
Rev David Priddy
Rev Andrew Reed
Pauline Shilston
Chaplain John Wasley
Graham Wells
Mary Windo

The South East Methodist District Team:

Rev David Hinchliffe

Rev Sam Funnell

Wendy Cory

Rev Nick Oborski



prayer@easternendnews.org.uk

IF YOU WOULD BE INTERESTED IN PREPARING THIS PAGE
PLEASE CONTACT THE EDITORS